

EADH 2018
Data In Digital Humanities
Galway, 2018

Building a domain specific Research Ontology from external Databases of Academic History

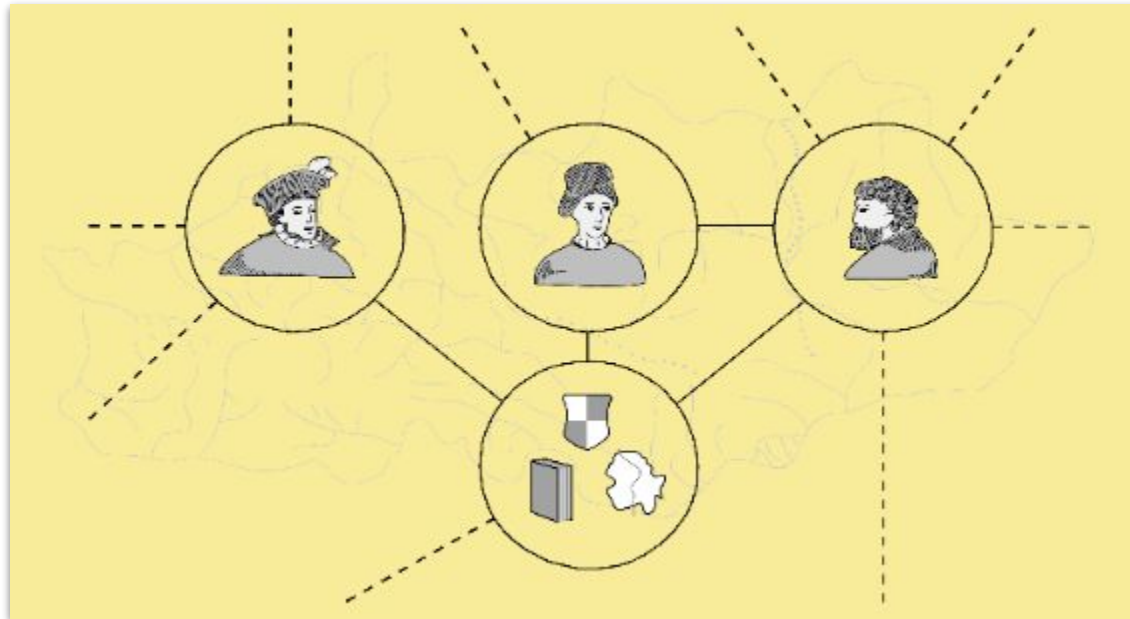
Thomas Riechert, Jennifer Blanke, **Edgard Marx**

Outline

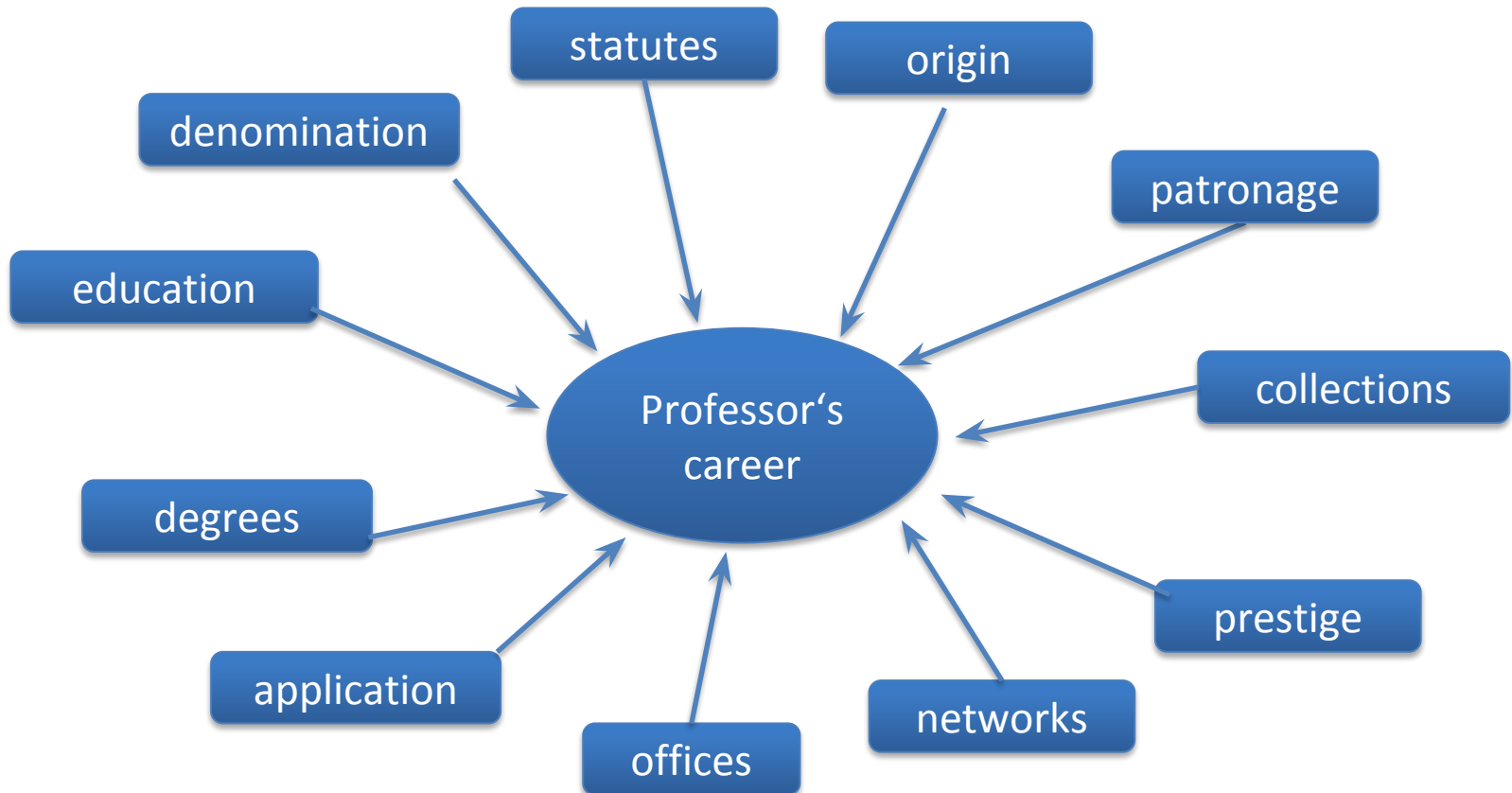
- **Introduction**
- **Why?**
- **Data (Research) Life Cycle**

Professors' Career Patterns on the Web

Early modern university professors (German Protestant)

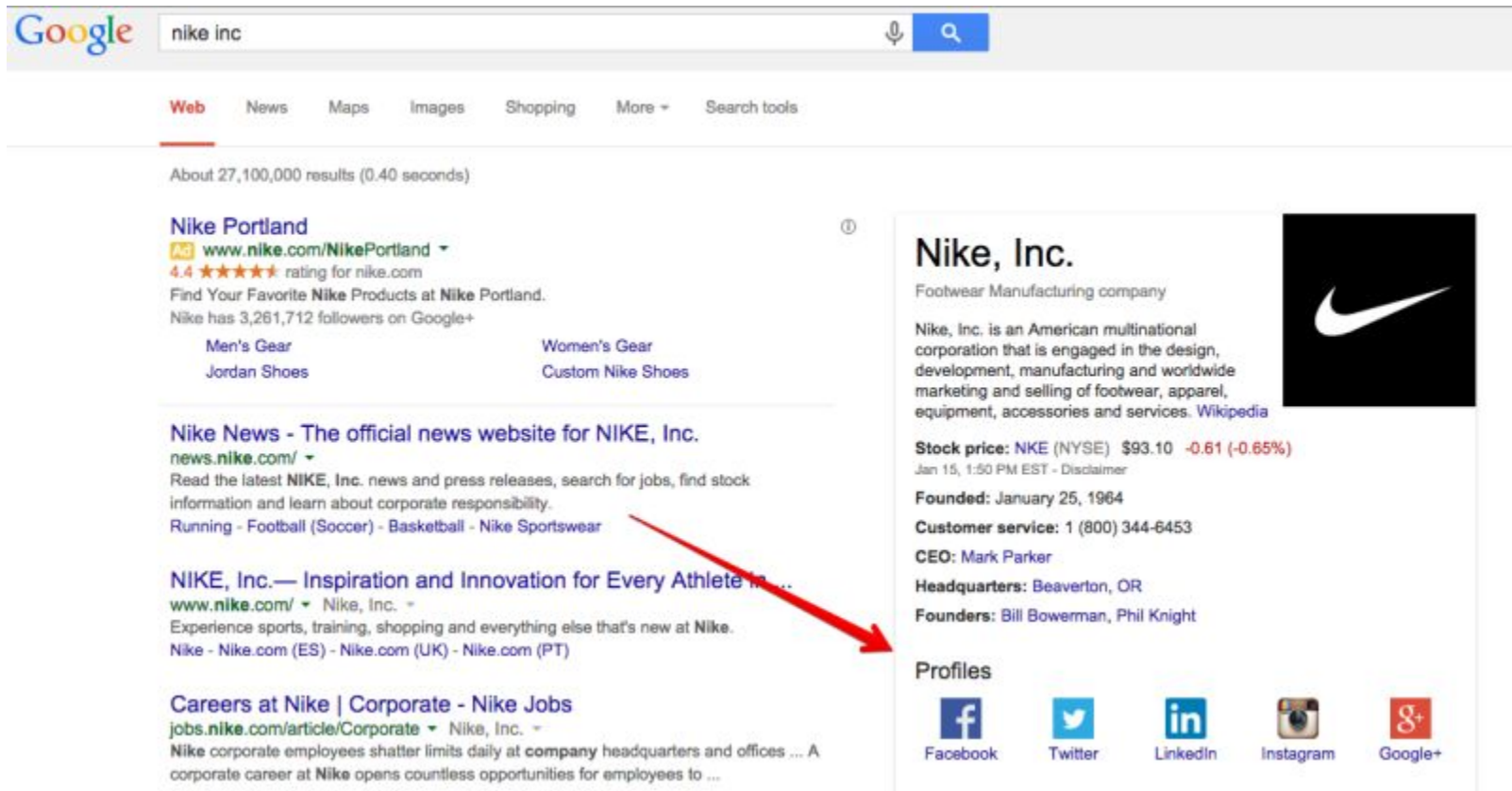


- **Relevant criterias for early modern (German protestant) professors' recruitment**



Why RDF?

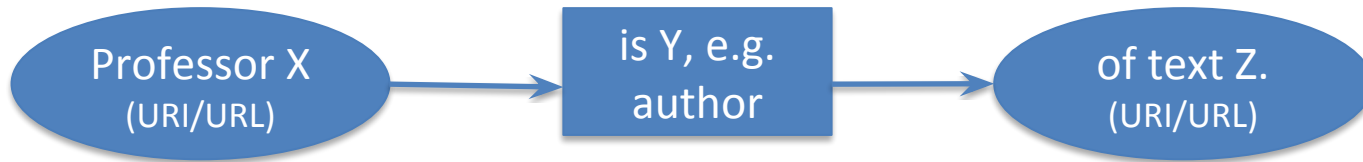
- Structured (You can access to its content through formal languages)



The image shows a Google search interface for 'nike inc'. The search bar contains 'nike inc' and a search button. Below the search bar are navigation tabs: Web, News, Maps, Images, Shopping, More, and Search tools. The search results show 'About 27,100,000 results (0.40 seconds)'. The first result is an advertisement for 'Nike Portland' with a 4.4-star rating and a link to 'www.nike.com/NikePortland'. Below the ad are links for 'Men's Gear', 'Women's Gear', 'Jordan Shoes', and 'Custom Nike Shoes'. The second result is 'Nike News - The official news website for NIKE, Inc.' with a link to 'news.nike.com/'. The third result is 'NIKE, Inc.— Inspiration and Innovation for Every Athlete' with a link to 'www.nike.com/'. The fourth result is 'Careers at Nike | Corporate - Nike Jobs' with a link to 'jobs.nike.com/article/Corporate'. On the right side of the search results is a knowledge panel for 'Nike, Inc.' featuring the Nike logo, a description of the company as a 'Footwear Manufacturing company', and various details: 'Stock price: NKE (NYSE) \$93.10 -0.61 (-0.65%)', 'Founded: January 25, 1964', 'Customer service: 1 (800) 344-6453', 'CEO: Mark Parker', 'Headquarters: Beaverton, OR', and 'Founders: Bill Bowerman, Phil Knight'. At the bottom of the knowledge panel are social media profiles for Facebook, Twitter, LinkedIn, Instagram, and Google+.

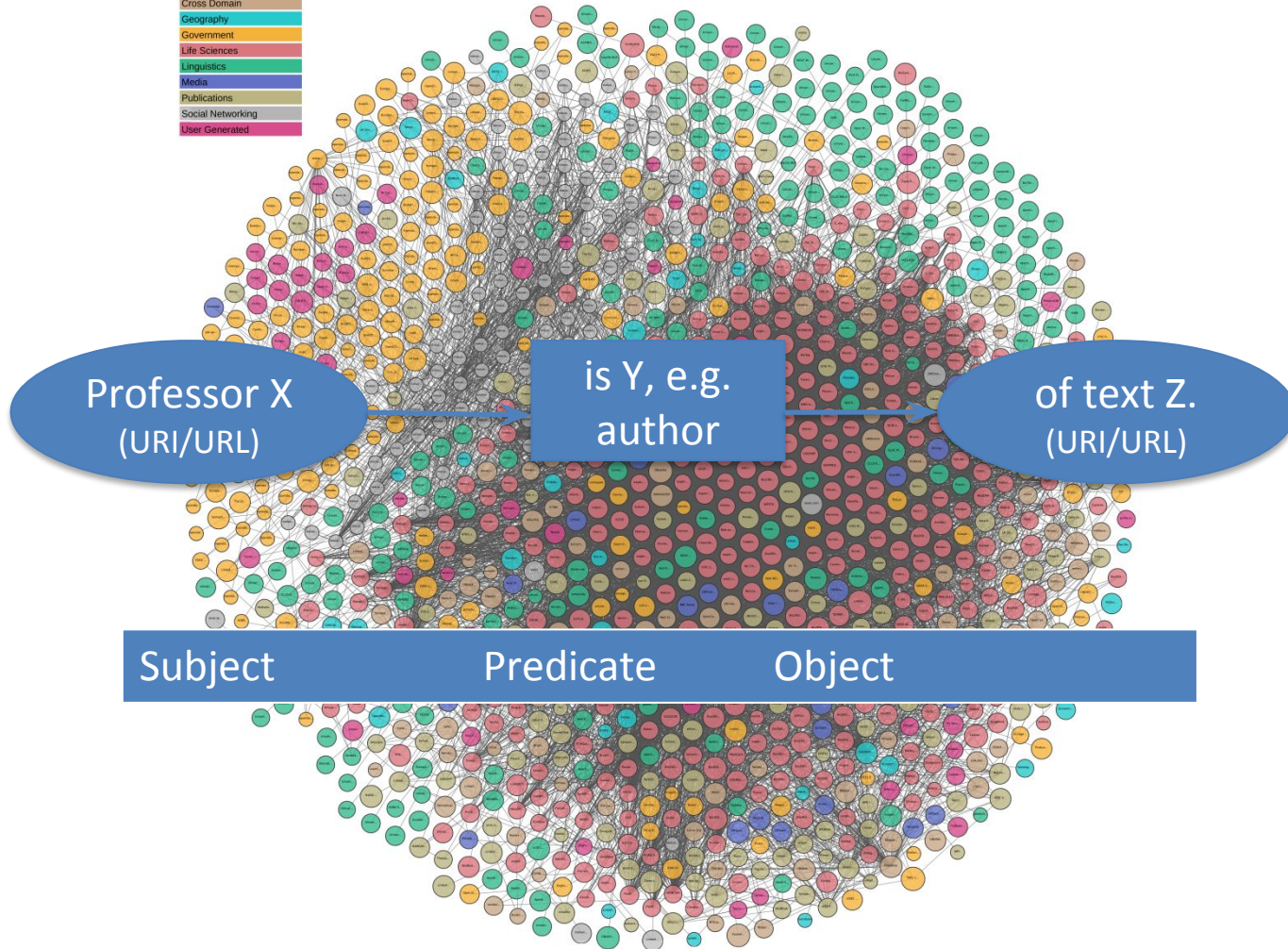
- Structured (You can access to its content through formal languages)
- Share/Describe data and metadata
- A standardized way to describe and name things
 - Reusable Schema
 - Unified Schema (vs multi-schema RDB, spreadsheets)
- Describe logic relations
 - $\text{father}(r) \leftrightarrow \text{hasChild}(r) \wedge \text{isMale}(r)$
- Technology and implementation independent
- **Interoperability**

How it works?



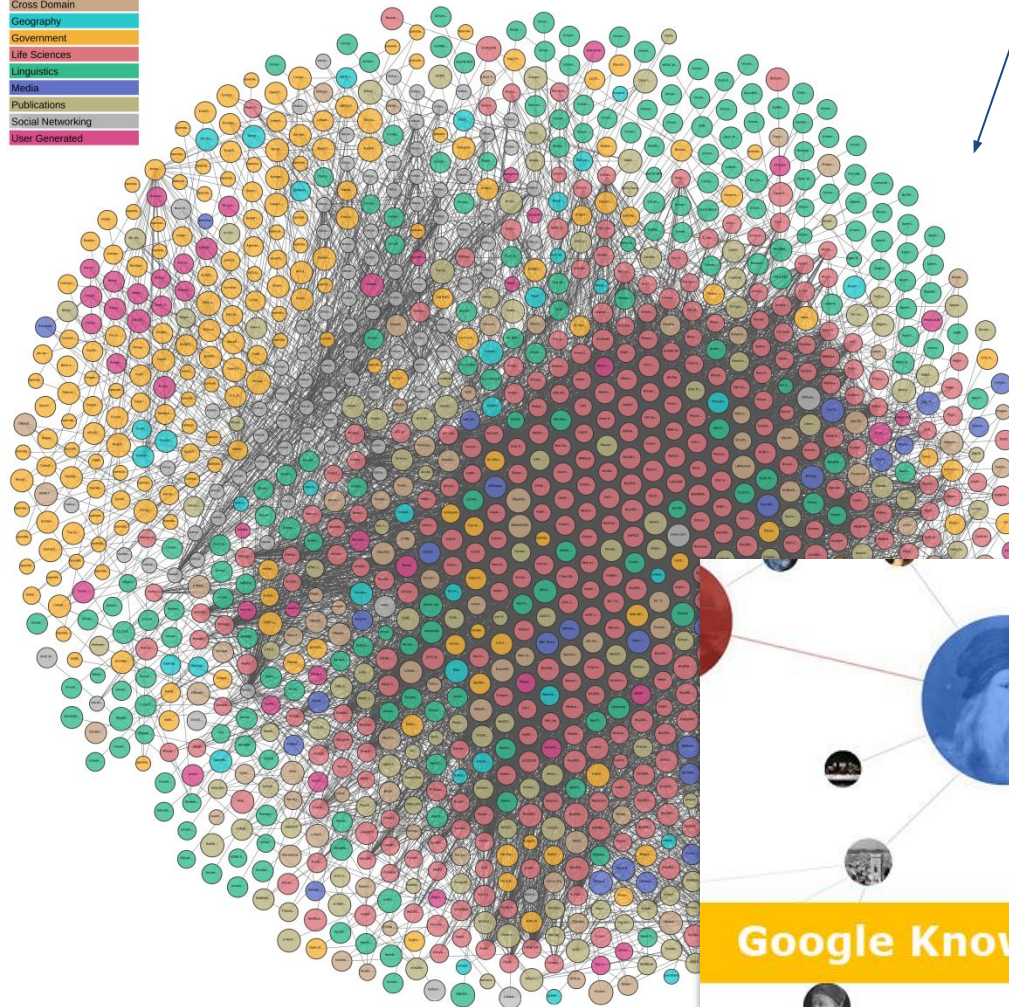
Semantic Web relations RDF -triple

- Legend
- Cross Domain
 - Geography
 - Government
 - Life Sciences
 - Linguistics
 - Media
 - Publications
 - Social Networking
 - User Generated



The Linked Open Data Cloud

- Legend
- Cross Domain
 - Geography
 - Government
 - Life Sciences
 - Linguistics
 - Media
 - Publications
 - Social Networking
 - User Generated



ours

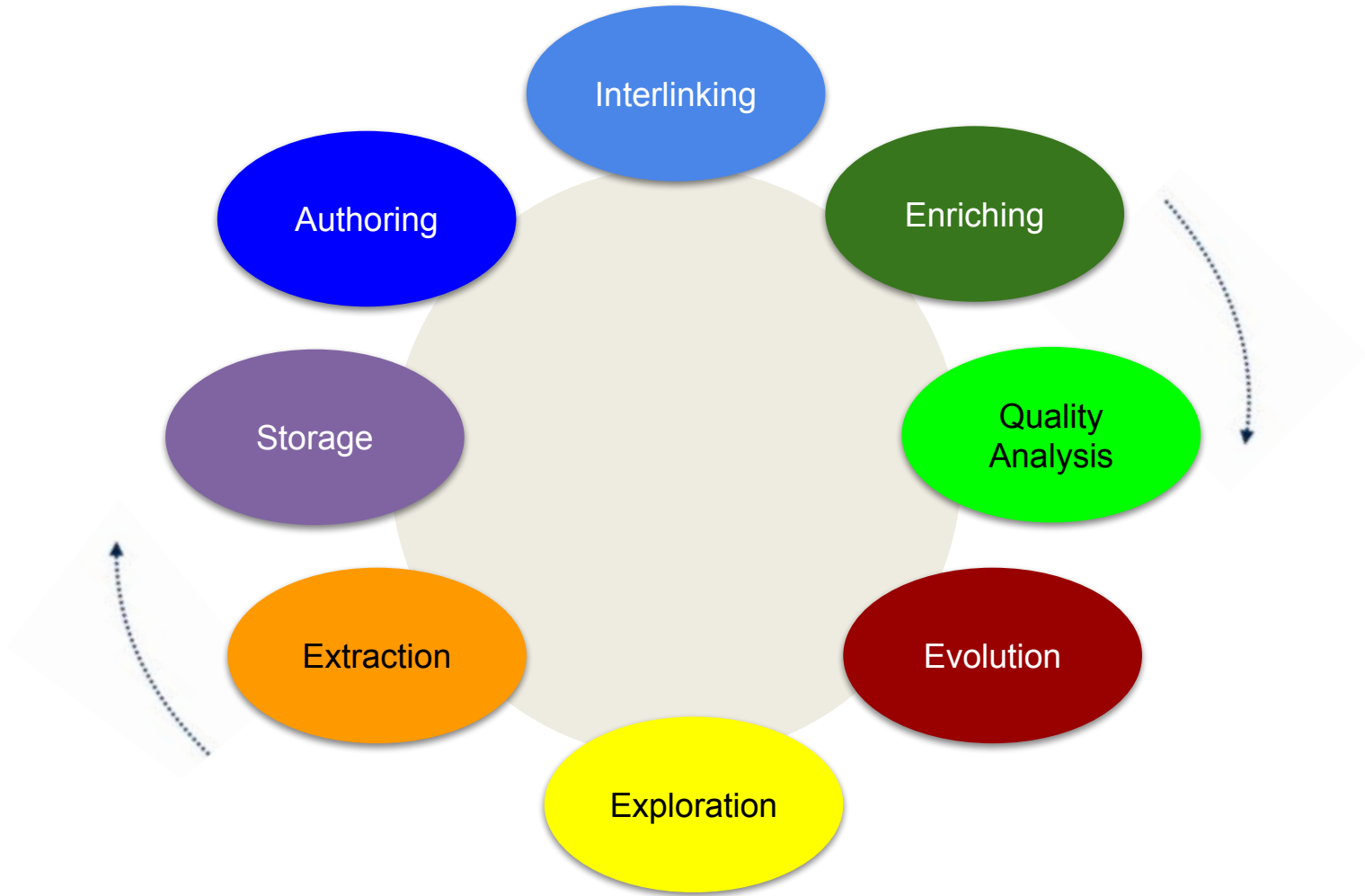


theirs



The Linked Open Data Cloud from lod-cloud.net

Linked Data (Research) Life Cycle



Professors' Catalogues - prosopographic datasets

Extraction



Professorenkatalog der Universität Leipzig | catalogus professorum lipsienstium

Bitte wählen Sie eine Epoche aus:

- 1409-1527
- 1538-1829**
- 1830-1869
- 1870-1918
- 1919-1932
- 1933-1945
- 1946-1989
- 1990-2014

Epochen > 1538-1829
Fakultäten > Theologische Fakultät der Universität Leipzig
Daten: Ressource: PDF | Druckerfreundlich

Prof. Dr. theol. *Johann Benedikt Carpzov I.*

Lebensdaten

geb. 22.06.1607 in Rochlitz
gest. 22.10.1657 in Leipzig
Konfession: evangelisch-lutherisch
PND: 117674214

Lebenslauf

Studium

- 1618-1627 Studium: in Wittenberg
- 1628-1634 Studium: Theologie in Leipzig

Qualifikation

- 1627 Promotion zum Mag. art. an der Universität Wittenberg
- 1634 Promotion zum Bacc. theol. an der Universität Leipzig
- 1651 Promotion zum Dr. theol. an der Universität Leipzig

Akademische Karriere

- 1643-1646 aoProf für Theologie an der Theologischen Fakultät der Universität Leipzig
- 1646-1657 oProf (quartus) für Theologie an der Theologischen Fakultät der Universität Leipzig
- 1657 oProf (tertius) für Theologie an der Theologischen Fakultät der Universität Leipzig

Ämter

- 1650-1651 Dekan der Theologischen Fakultät der Universität Leipzig

Publikationen (Auswahl)

- Hodegeticum brevis aphorismis olim pro collegio concionatorio conceptum et nunc revisum, Leipzig 1636.
- Vindicatio Doctrinae Orthodoxae de Sacramentis in genere a Corruptelis Tridentinorum, & Suppelitis, quas illis contra Chemnicum ferre voluit Bellarminus lib. I. & II. de Sacramentis, Leipzig 1651.
- Systema theologicum, Leipzig 1653.
- Disputatio Theologica De Conversione Hominum Ad Salutem, Leipzig 1655.
- Isagogae in libros ecclesiarum Lutherarum symbolicos; opus posth. a J. Oleario continuatum, Leipzig 1665.

Weitere Informationen

- 1632 Pfarrer in Meuselwitz
- 1633 Subdiakon, 1637 Diakon, 1643 Archidiakon St. Thomas Leipzig
- seit 1636 verheiratet mit Elisabeth Wrieffpenning, 6 Kinder
- 1657 Domherr zu Zeltz
- Konsistorialassessor

Referenzen zu anderen Projekten

- Katalog der Deutschen Nationalbibliothek
- Allgemeine Deutsche Biographie (Wikisource)
- Eintrag im Biographisch-Bibliographischen Kirchenlexikon (BBKL)
- Titel im VD17
- Biographien in der Allgemeinen Deutschen Biographie
- Biographische Informationen des Registers zu www.deutsche-biographie.de
- Deutschsprachige Wikipedia
- Forschungsstelle für Personalschriften, Germany
- Titel im Verbundkatalog des GBV
- VIAF

Referenzen und Quellen

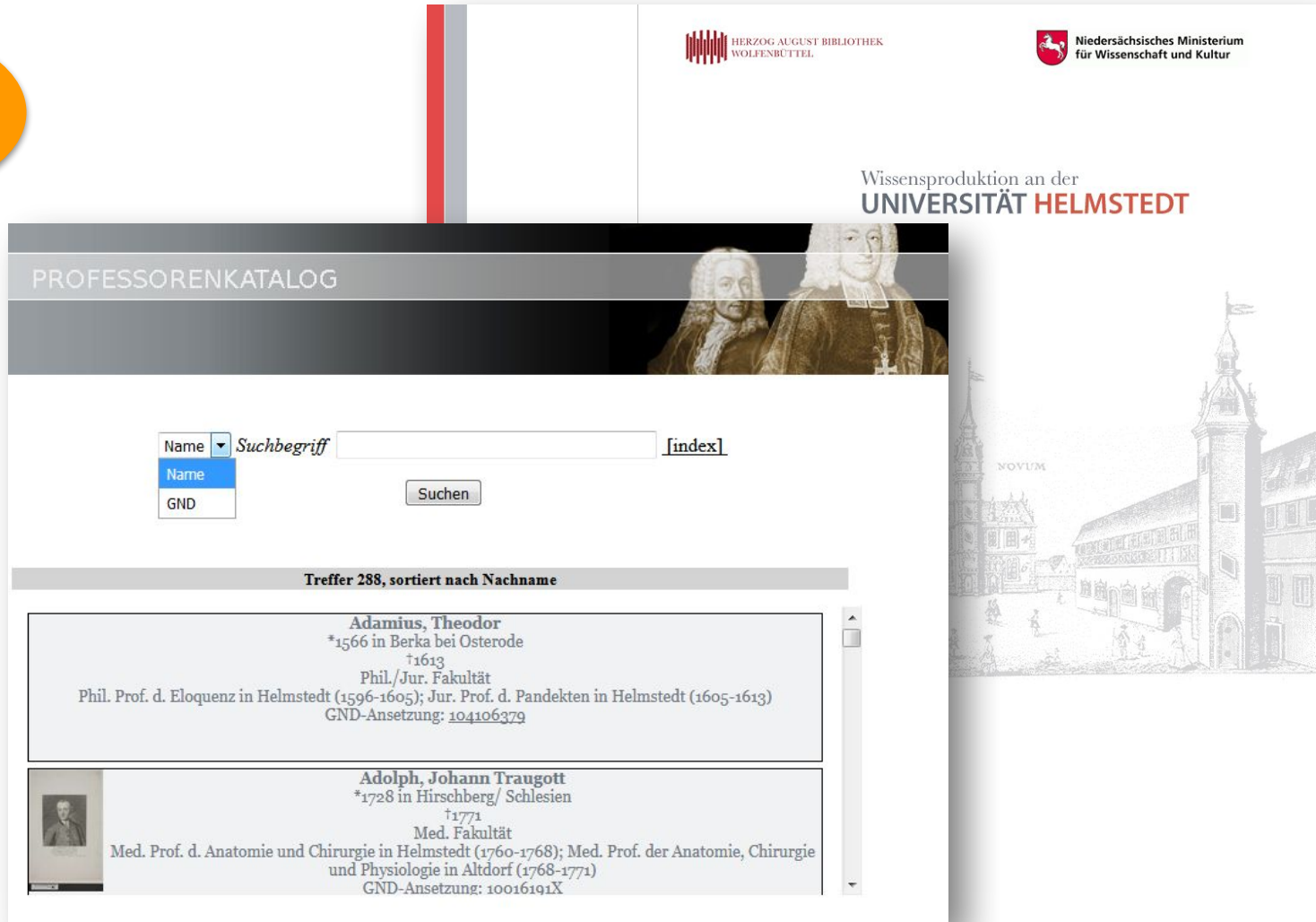
Hein/Junghans, Die Professoren und Dozenten der Theologischen Fakultät der Universität Leipzig von 1409 bis 2009, S. 178.; ADB, Bd. 4, S. 20 f.; Bautz, Bd. 1, Sp. 937.

Links

- http://de.wikipedia.org/wiki/Johann_Benedikt_Carpzov_I.

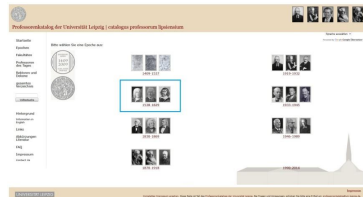
Professors' Catalogues - prosopographic datasets

Extraction



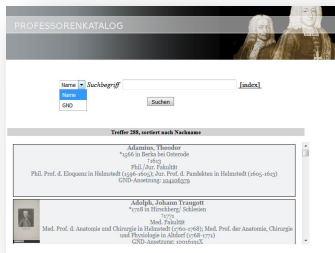
The screenshot shows the 'PROFESSORENKATALOG' website. At the top, there are logos for 'HERZOG AUGUST BIBLIOTHEK WOLFENBÜTTEL' and 'Niedersächsisches Ministerium für Wissenschaft und Kultur'. Below these is the text 'Wissensproduktion an der UNIVERSITÄT HELMSTEDT'. The main content area features a search bar with a dropdown menu for 'Name' (selected), a search input field containing 'Suchbegriff', and a '[index]' link. A 'Suchen' button is located below the search bar. The search results are titled 'Treffer 288, sortiert nach Nachname'. Two results are visible: 1. **Adamius, Theodor**, born 1566 in Berka bei Osterode, died 1613, Phil./Jur. Fakultät, Phil. Prof. d. Eloquenz in Helmstedt (1596-1605); Jur. Prof. d. Pandekten in Helmstedt (1605-1613), GND-Ansetzung: 104106379. 2. **Adolph, Johann Traugott**, born 1728 in Hirschberg/ Schlesien, died 1771, Med. Fakultät, Med. Prof. d. Anatomie und Chirurgie in Helmstedt (1760-1768); Med. Prof. der Anatomie, Chirurgie und Physiologie in Altdorf (1768-1771), GND-Ansetzung: 10016191X. A small portrait of Adolph, Johann Traugott is shown next to his entry. On the right side of the page, there is a faint illustration of a building with the word 'NOVUM' above it.

Extraction



Leipzig Catalog

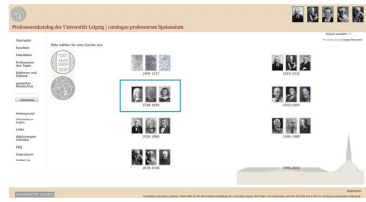
Extraction



Helmstedt Catalog

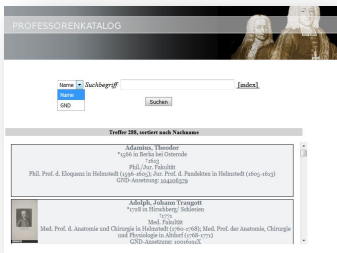
Extraction

Interlinking



Leipzig Catalog

Extraction



Helmstedt Catalog

Extraction

PCP-On-Web Dataset



1	Lipsius Predicates (Properties)	Helmstedt Predicates (Properties)	Merged Properties
2		<http://ns.aks.w.org/spatialHierarchy/priorTo>	<http://ns.aks.w.org/spatialHierarchy/priorTo>
3		<http://ns.aks.w.org/spatialHierarchy/subsequentTo>	<http://ns.aks.w.org/spatialHierarchy/subsequentTo>
4		<http://uni-helmstedt.hab.de/cph/model/alternativeWritingOfName>	<http://purl.org/pcp-on-web#alternativeWritingOfName>
5		<http://uni-helmstedt.hab.de/cph/model/author>	<http://purl.org/pcp-on-web#author>
6	<http://catalogus-professorum.org/cpd/academicalTitle>		<http://purl.org/pcp-on-web#academicalTitle>
7	<http://catalogus-professorum.org/cpd/additionToSurname>		<http://purl.org/pcp-on-web#additionToSurname>
8	<http://catalogus-professorum.org/cpd/alternativeWritingOfSurname>		<http://purl.org/pcp-on-web#alternativeWritingOfSurname>
9	<http://catalogus-professorum.org/cpd/archiveCode>		<http://purl.org/pcp-on-web#archiveCode>
10	<http://catalogus-professorum.org/cpd/bodyPlace>		<http://purl.org/pcp-on-web#bodyPlace>
11	<http://catalogus-professorum.org/cpd/cognateBody>		<http://purl.org/pcp-on-web#cognateBody>
12	<http://catalogus-professorum.org/cpd/consistsOf>	<http://uni-helmstedt.hab.de/cph/model/consistsOf>	<http://purl.org/pcp-on-web#consistsOf>
13	<http://catalogus-professorum.org/cpd/date>	<http://uni-helmstedt.hab.de/cph/model/date>	<http://purl.org/pcp-on-web#date>
14		<http://uni-helmstedt.hab.de/cph/model/dedicatee>	<http://purl.org/pcp-on-web#dedicatedTo>
15		<http://uni-helmstedt.hab.de/cph/model/digitalisat>	<http://purl.org/pcp-on-web#digitalisat>
16		<http://uni-helmstedt.hab.de/cph/model/documentBody>	<http://purl.org/pcp-on-web#faculty>
17		<http://uni-helmstedt.hab.de/cph/model/endDate>	<http://purl.org/pcp-on-web#endDate>

Task Description

<https://github.com/pcp-on-web/helmstedt-leipzig-dataset/wiki/Data-sets-fusion:-task-description>

Ontology

<http://purl.org/pcp-on-web/ontology>




Interlinking

- **Task performed with Limes Link Discovery Framework using Wombat Simple algorithm with two specs**
 - **Highest acceptance rate (0.8)**
 - `<leipzig:heinrichmatthiasheinrichs>` `<helmstedt:13084>`
`0.8164965809277261`
 - `<helmstedt:13084>` “Andreas Heinrich Matthias”
 - `<leipzig:heinrichmatthiasheinrichs>` “Heinrich Matthias Heinrich”
 - **Lowest acceptance rate (0.5) had 1683 matching instances**

Task Description

<https://github.com/pcp-on-web/helmstedt-leipzig-dataset/wiki/Instance-Matching:-Link-Discovery>



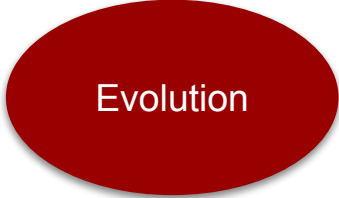
Quality
Analysis

- **Labeling problems**
 - **Properties**
 - use of multi languages (e.g. leipzig:hasMatrikel)
 - use of different patterns (e.g. leipzig:surname_lat)
 - wrong label (e.g. leipzig:lecture -> pcpl:lecturer)
 - **Classes**
 - wrong concepts (e.g. leipzig:course -> pcpl:lecture)

Task Description

<https://github.com/pcp-on-web/helmstedt-leipzig-dataset/wiki/Data-sets-fusion:-task-description>

Vocabulary Enhancement



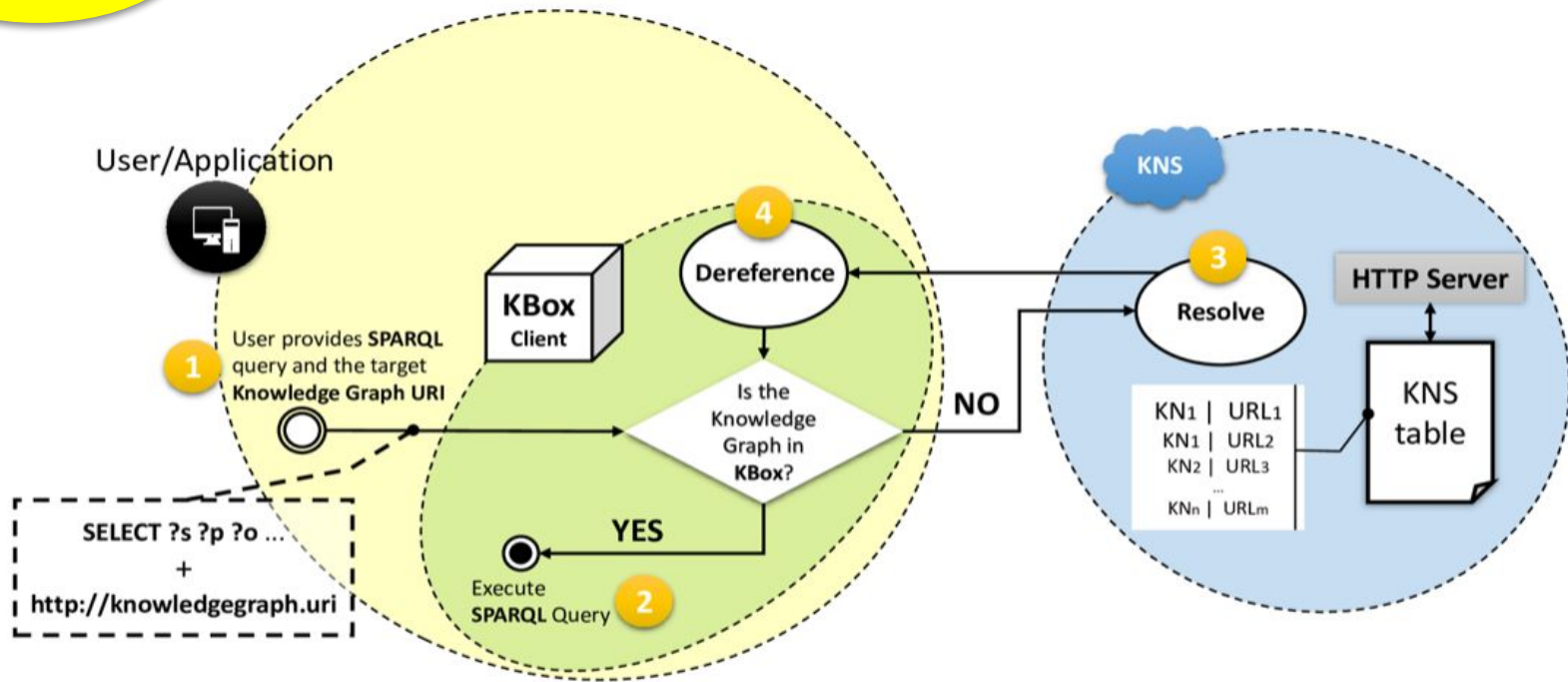
Properties	
Original	Renamed
http://uni-helmstedt.hab.de/cph/model/dedicatee	http://purl.org/pcp-on-web/ontology#dedicatedTo
http://uni-helmstedt.hab.de/cph/model/documentBody	http://purl.org/pcp-on-web/ontology#faculty
http://uni-helmstedt.hab.de/cph/model/gratulant	http://purl.org/pcp-on-web/ontology#well-wisher
http://uni-helmstedt.hab.de/cph/model/lecture	http://purl.org/pcp-on-web/ontology#lecturer
http://uni-helmstedt.hab.de/cph/model/page	http://purl.org/pcp-on-web/ontology#folio
http://uni-helmstedt.hab.de/cph/model/forename_lat	http://purl.org/pcp-on-web/ontology#latinForename
http://uni-helmstedt.hab.de/cph/model/surname_lat	http://purl.org/pcp-on-web/ontology#latinSurname
http://uni-helmstedt.hab.de/cph/model/hasMatrikel	http://purl.org/pcp-on-web/ontology#hasEnrollment

Classes	
Original	Renamed
http://uni-helmstedt.hab.de/cph/model/Course	http://purl.org/pcp-on-web/ontology#Lecture

Task Description

<https://github.com/pcp-on-web/helmstedt-leipzig-dataset/wiki/Data-sets-fusion:-task-description>

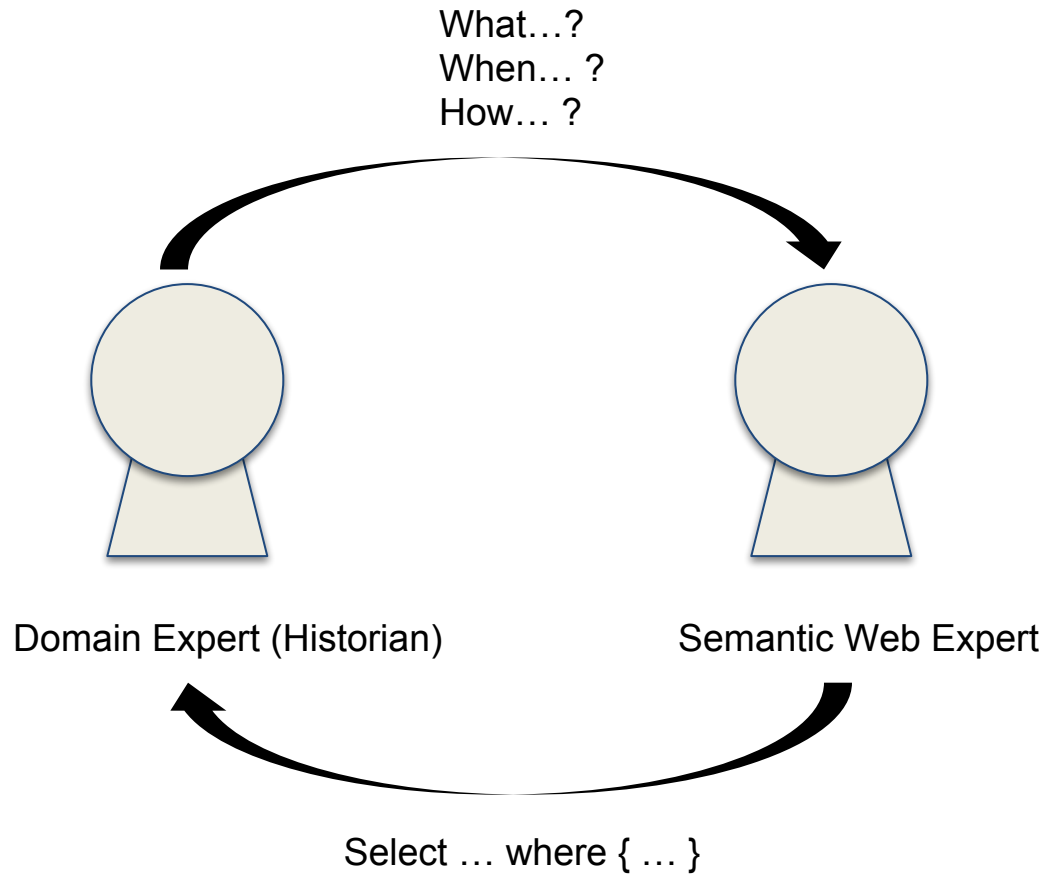
Exploration



<https://github.com/AKSW/KBox>

Research Interaction

Exploration

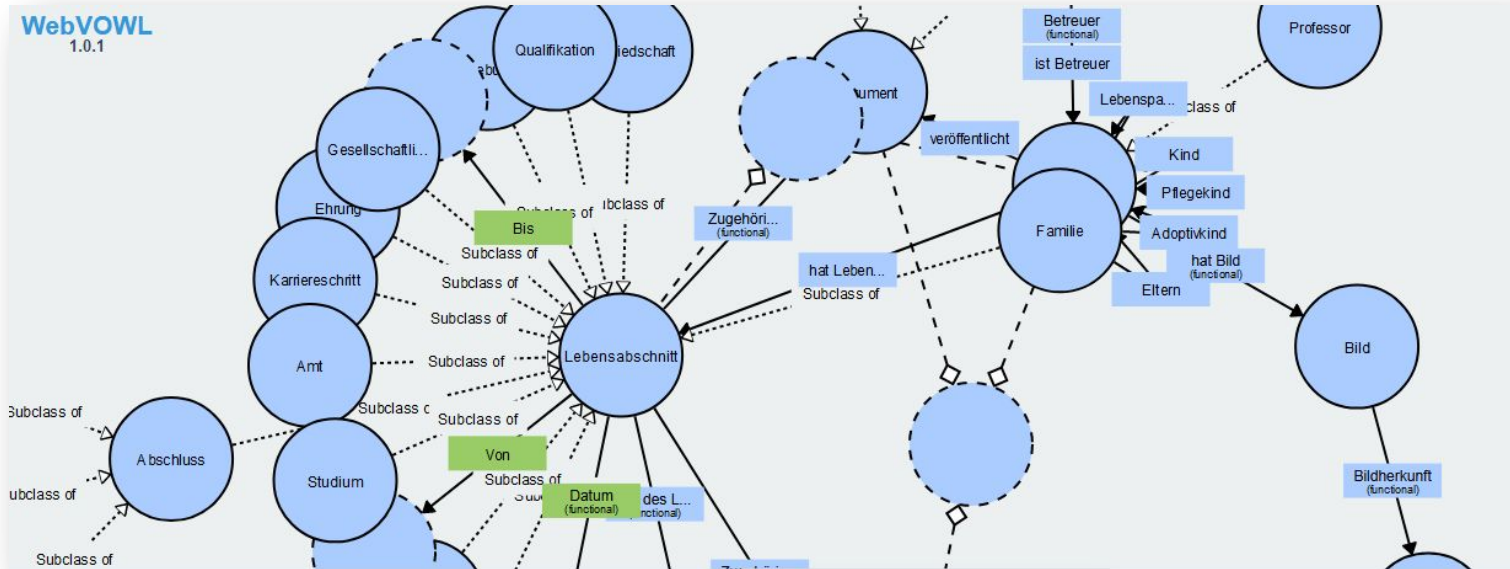


Example



Exploration

Give me the amount of qualification documents with professors as praeses, arranged by year and faculty.	Result																																																																																																															
<pre> prefix pcpc: <http://purl.org/pcp-on-web/ontology#> prefix rdf: <http://www.w3.org/1999/02/22-rdf-syntax-ns#> prefix rdfs: <http://www.w3.org/2000/01/rdf-schema#> select (count(?doc) as ?docN) ?faculty ?year where { ?doc pcpc:praeses ?professor. ?doc a pcpc:QualificationDocument. ?professor a pcpc:Professor . ?doc pcpc:faculty ?faculty. ?doc pcpc:date ?docDate. bind (year(?docDate) as ?year). } group by ?faculty ?year order by asc(?year) asc(?faculty) </pre>	<table border="1"> <thead> <tr> <th>docN</th> <th>faculty</th> <th>year</th> </tr> </thead> <tbody> <tr><td>1</td><td>helmstedt:faculty/juristische-fakultaet</td><td></td></tr> <tr><td>1</td><td>helmstedt:faculty/theologische-fakultaet</td><td></td></tr> <tr><td>1</td><td>helmstedt:faculty/juristische-fakultaet</td><td>1574</td></tr> <tr><td>2</td><td>helmstedt:faculty/theologische-fakultaet</td><td>1574</td></tr> <tr><td>2</td><td>helmstedt:faculty/juristische-fakultaet</td><td>1575</td></tr> <tr><td>2</td><td>helmstedt:faculty/theologische-fakultaet</td><td>1575</td></tr> <tr><td>1</td><td>helmstedt:faculty/juristische-fakultaet</td><td>1576</td></tr> <tr><td>1</td><td>helmstedt:faculty/theologische-fakultaet</td><td>1576</td></tr> <tr><td>1</td><td>helmstedt:faculty/juristische-fakultaet</td><td>1577</td></tr> <tr><td>1</td><td>helmstedt:faculty/theologische-fakultaet</td><td>1577</td></tr> <tr><td>1</td><td>helmstedt:faculty/juristische-fakultaet</td><td>1578</td></tr> <tr><td>1</td><td>helmstedt:faculty/theologische-fakultaet</td><td>1578</td></tr> <tr><td>6</td><td>helmstedt:faculty/juristische-fakultaet</td><td>1579</td></tr> <tr><td>6</td><td>helmstedt:faculty/theologische-fakultaet</td><td>1579</td></tr> <tr><td>4</td><td>helmstedt:faculty/juristische-fakultaet</td><td>1580</td></tr> <tr><td>4</td><td>helmstedt:faculty/theologische-fakultaet</td><td>1580</td></tr> <tr><td>6</td><td>helmstedt:faculty/juristische-fakultaet</td><td>1581</td></tr> <tr><td>1</td><td>helmstedt:faculty/philosophische-fakultaet</td><td>1581</td></tr> <tr><td>6</td><td>helmstedt:faculty/theologische-fakultaet</td><td>1581</td></tr> <tr><td>2</td><td>helmstedt:faculty/juristische-fakultaet</td><td>1582</td></tr> <tr><td>2</td><td>helmstedt:faculty/theologische-fakultaet</td><td>1582</td></tr> <tr><td>2</td><td>helmstedt:faculty/juristische-fakultaet</td><td>1583</td></tr> <tr><td>1</td><td>helmstedt:faculty/philosophische-fakultaet</td><td>1583</td></tr> <tr><td>2</td><td>helmstedt:faculty/theologische-fakultaet</td><td>1583</td></tr> <tr><td>5</td><td>helmstedt:faculty/juristische-fakultaet</td><td>1585</td></tr> <tr><td>1</td><td>helmstedt:faculty/medizinische-fakultaet</td><td>1585</td></tr> <tr><td>1</td><td>helmstedt:faculty/philosophische-fakultaet</td><td>1585</td></tr> <tr><td>1</td><td>helmstedt:faculty/theologische-fakultaet</td><td>1585</td></tr> <tr><td>30</td><td>helmstedt:faculty/juristische-fakultaet</td><td>1586</td></tr> <tr><td>30</td><td>helmstedt:faculty/theologische-fakultaet</td><td>1586</td></tr> <tr><td>6</td><td>helmstedt:faculty/juristische-fakultaet</td><td>1587</td></tr> <tr><td>2</td><td>helmstedt:faculty/medizinische-fakultaet</td><td>1587</td></tr> <tr><td>1</td><td>helmstedt:faculty/philosophische-fakultaet</td><td>1587</td></tr> <tr><td>6</td><td>helmstedt:faculty/theologische-fakultaet</td><td>1587</td></tr> <tr><td>3</td><td>helmstedt:faculty/juristische-fakultaet</td><td>1588</td></tr> <tr><td>2</td><td>helmstedt:faculty/theologische-fakultaet</td><td>1588</td></tr> </tbody> </table>	docN	faculty	year	1	helmstedt:faculty/juristische-fakultaet		1	helmstedt:faculty/theologische-fakultaet		1	helmstedt:faculty/juristische-fakultaet	1574	2	helmstedt:faculty/theologische-fakultaet	1574	2	helmstedt:faculty/juristische-fakultaet	1575	2	helmstedt:faculty/theologische-fakultaet	1575	1	helmstedt:faculty/juristische-fakultaet	1576	1	helmstedt:faculty/theologische-fakultaet	1576	1	helmstedt:faculty/juristische-fakultaet	1577	1	helmstedt:faculty/theologische-fakultaet	1577	1	helmstedt:faculty/juristische-fakultaet	1578	1	helmstedt:faculty/theologische-fakultaet	1578	6	helmstedt:faculty/juristische-fakultaet	1579	6	helmstedt:faculty/theologische-fakultaet	1579	4	helmstedt:faculty/juristische-fakultaet	1580	4	helmstedt:faculty/theologische-fakultaet	1580	6	helmstedt:faculty/juristische-fakultaet	1581	1	helmstedt:faculty/philosophische-fakultaet	1581	6	helmstedt:faculty/theologische-fakultaet	1581	2	helmstedt:faculty/juristische-fakultaet	1582	2	helmstedt:faculty/theologische-fakultaet	1582	2	helmstedt:faculty/juristische-fakultaet	1583	1	helmstedt:faculty/philosophische-fakultaet	1583	2	helmstedt:faculty/theologische-fakultaet	1583	5	helmstedt:faculty/juristische-fakultaet	1585	1	helmstedt:faculty/medizinische-fakultaet	1585	1	helmstedt:faculty/philosophische-fakultaet	1585	1	helmstedt:faculty/theologische-fakultaet	1585	30	helmstedt:faculty/juristische-fakultaet	1586	30	helmstedt:faculty/theologische-fakultaet	1586	6	helmstedt:faculty/juristische-fakultaet	1587	2	helmstedt:faculty/medizinische-fakultaet	1587	1	helmstedt:faculty/philosophische-fakultaet	1587	6	helmstedt:faculty/theologische-fakultaet	1587	3	helmstedt:faculty/juristische-fakultaet	1588	2	helmstedt:faculty/theologische-fakultaet	1588
docN	faculty	year																																																																																																														
1	helmstedt:faculty/juristische-fakultaet																																																																																																															
1	helmstedt:faculty/theologische-fakultaet																																																																																																															
1	helmstedt:faculty/juristische-fakultaet	1574																																																																																																														
2	helmstedt:faculty/theologische-fakultaet	1574																																																																																																														
2	helmstedt:faculty/juristische-fakultaet	1575																																																																																																														
2	helmstedt:faculty/theologische-fakultaet	1575																																																																																																														
1	helmstedt:faculty/juristische-fakultaet	1576																																																																																																														
1	helmstedt:faculty/theologische-fakultaet	1576																																																																																																														
1	helmstedt:faculty/juristische-fakultaet	1577																																																																																																														
1	helmstedt:faculty/theologische-fakultaet	1577																																																																																																														
1	helmstedt:faculty/juristische-fakultaet	1578																																																																																																														
1	helmstedt:faculty/theologische-fakultaet	1578																																																																																																														
6	helmstedt:faculty/juristische-fakultaet	1579																																																																																																														
6	helmstedt:faculty/theologische-fakultaet	1579																																																																																																														
4	helmstedt:faculty/juristische-fakultaet	1580																																																																																																														
4	helmstedt:faculty/theologische-fakultaet	1580																																																																																																														
6	helmstedt:faculty/juristische-fakultaet	1581																																																																																																														
1	helmstedt:faculty/philosophische-fakultaet	1581																																																																																																														
6	helmstedt:faculty/theologische-fakultaet	1581																																																																																																														
2	helmstedt:faculty/juristische-fakultaet	1582																																																																																																														
2	helmstedt:faculty/theologische-fakultaet	1582																																																																																																														
2	helmstedt:faculty/juristische-fakultaet	1583																																																																																																														
1	helmstedt:faculty/philosophische-fakultaet	1583																																																																																																														
2	helmstedt:faculty/theologische-fakultaet	1583																																																																																																														
5	helmstedt:faculty/juristische-fakultaet	1585																																																																																																														
1	helmstedt:faculty/medizinische-fakultaet	1585																																																																																																														
1	helmstedt:faculty/philosophische-fakultaet	1585																																																																																																														
1	helmstedt:faculty/theologische-fakultaet	1585																																																																																																														
30	helmstedt:faculty/juristische-fakultaet	1586																																																																																																														
30	helmstedt:faculty/theologische-fakultaet	1586																																																																																																														
6	helmstedt:faculty/juristische-fakultaet	1587																																																																																																														
2	helmstedt:faculty/medizinische-fakultaet	1587																																																																																																														
1	helmstedt:faculty/philosophische-fakultaet	1587																																																																																																														
6	helmstedt:faculty/theologische-fakultaet	1587																																																																																																														
3	helmstedt:faculty/juristische-fakultaet	1588																																																																																																														
2	helmstedt:faculty/theologische-fakultaet	1588																																																																																																														



<https://catalogus-professorum.org/cpm/2/index-en.html>

- Shaped the relational database „Helmstedt Wissensportal“ by Semantic Web standards (RDF)
- Created a Mutual Ontology: <http://purl.org/pcp-on-web/ontology>
- Created the basis for a research ontology reflecting the complex research question of early modern scholarly career patterns (**in Germany**)
- Merged of the Helmstedt and Leipzig data:
<https://github.com/pcp-on-web/helmstedt-leipzig-dataset/wiki/Data-sets-fusion:-task-description>

KBox - Commands Example

```
java -jar kbox-v0.0.1-alpha3-RC16.jar -sparql "select ?p where { ?s ?p ?o} limit 10" -kb
"http://purl.org/pcp-on-web/dataset,http://purl.org/pcp-on-web/ontology"
```

```
-----
| p                |
=====
| <http://www.w3.org/2000/01/rdf-schema#domain>      |
| <http://www.w3.org/2000/01/rdf-schema#range>      |
| <http://www.w3.org/2000/01/rdf-schema#subClassOf>  |
| <http://www.w3.org/2000/01/rdf-schema#subClassOf>  |
| <http://www.w3.org/1999/02/22-rdf-syntax-ns#type> |
| <http://www.w3.org/2000/01/rdf-schema#subPropertyOf> |
| <http://www.w3.org/2000/01/rdf-schema#subClassOf>  |
| <http://www.w3.org/1999/02/22-rdf-syntax-ns#type> |
| <http://www.w3.org/2000/01/rdf-schema#subClassOf>  |
| <http://www.w3.org/1999/02/22-rdf-syntax-ns#type> |
-----
```

```
java -jar kbox-v0.0.1-alpha3-RC16.jar -list
Knowledge base table list
http://purl.org/pcp-on-web/ontology
http://purl.org/pcp-on-web/dataset
http://uni-helmstedt.hab.de/cph
http://catalogus-professorum.org/cpd
http://catalogus-professorum.org/lipsiensium
http://dbpedia.org/3.9/en/full
http://dbpedia.org/3.9/en
```

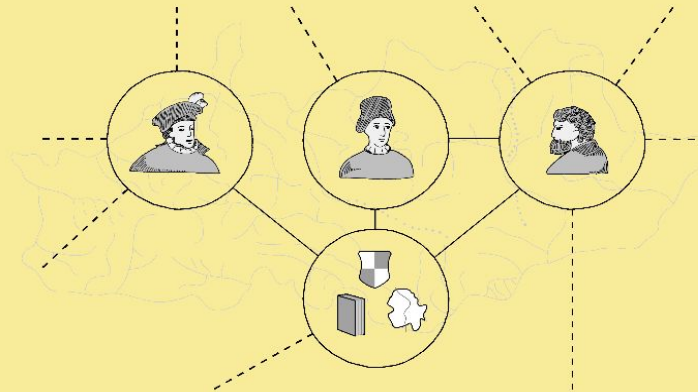
<https://github.com/AKSW/KBox>

- **Interlink other relevant datasets**
 - German National Library
 - Gelehrte Journale (Scholarly Journals in the Age of Enlightenment)
- **Development and evolution vocabulary and dataset**
- **Research on new ways of data exploration and visualization**

PCP-on-Web - Early modern university professors as digital entities for research

FORSCHUNGSPROJEKT (PCP-ON-WEB)

PARTNER PROJEKTZIELE PORTFOLIO BLOG PUBLIKATIONEN KONTAKT DE - EN

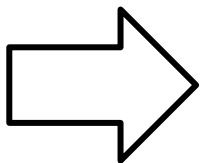


Professorale Karrieremuster der Frühen Neuzeit

Entwicklung einer wissenschaftlichen Methode zur Forschung auf online verfügbaren und verteilten Forschungsdatenbanken der Universitätsgeschichte.

DFG Projekt: 317044652

<https://pcp-on-web.htwk-leipzig.de/project/>



Thanks for your attention!

**Ontology engineering in the field of Academic History -
Research in the domain of database interoperability**

Jennifer Blanke <blanke@hab.de>

Thomas Riechert <thomas.rieichert@htwk-leipzig.de>

Edgard Marx <edgard.marx@htwk-leipzig.de>

Research project: Early modern professorial career patterns
<https://pcp-on-web.htwk-leipzig.de>

Funded by Deutsche Forschungsgemeinschaft (DFG) - Projectnumber:
[317044652](#)

Save the Date!

**Doktorandensymposium (PhD Workshop)
about research with online databases on academic history –
Digital tools, methods and standards**

Date: 04-05/04/2019

Deadline: 15/02/2019

Acceptance information: 01/03/2019